

State of Wyoming Corner Record

(In compliance with the *CORNER PERPETUATION AND FILING ACT*, Wyoming Statutes, 1997, Section 33-29-140, et seq., and the Rules and Regulations of the Board of Registration for Professional Engineers and Professional Land Surveyors)

Reverse side of this form may be used if more space is needed.

Record of original survey and citation of source of historical information (if corner is lost or obliterated). Description of corner monumentation evidence found and/or monument and accessories established to perpetuate the location of this corner. Sketch of relative location of monument, accessories, and reference points with course and distance to adjacent corner(s) (if determined in this survey). Method and rationale for reestablishment of lost or obliterated corner.

Section Corner: 15/16/21/22 T16N, R66W, 6th PM, Laramie County, Wyoming

GLO record: 15"x10"x7" Granite boulder

Found: 2" Aluminum Survey Cap, LS 2500, dated 1989 set flush with ground and circled by granite stone fragments.

Set: Ring of stones around found monument.

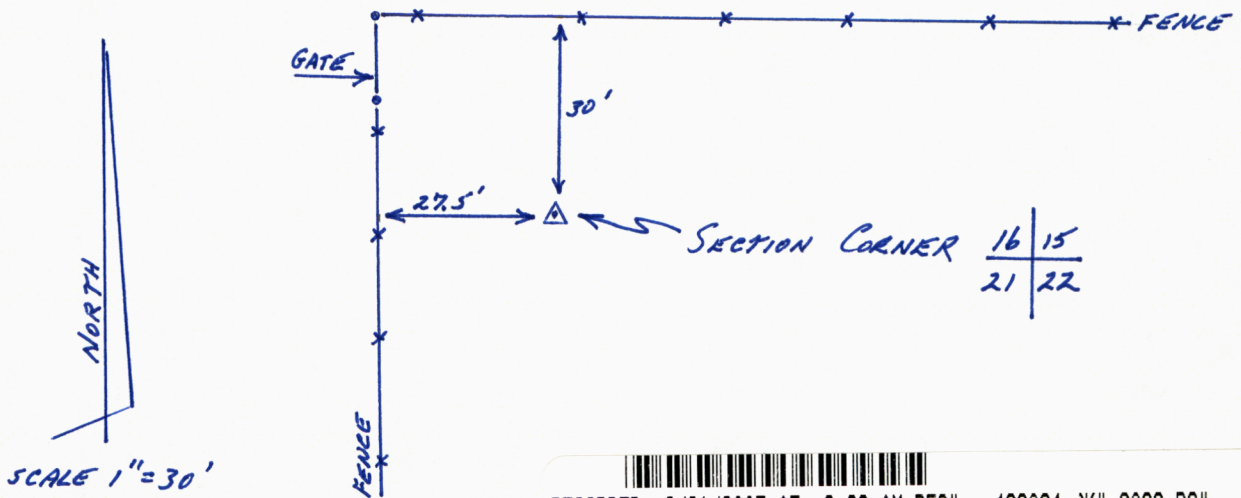


Looking northwesterly toward fence corner.



Found monument with ring of stones.

NOTE: Landowner indicates fences will be reconstructed on section lines, thus changing relative positions as shown hereon.



RECORDED 8/21/2007 AT 8:33 AM REC# 482024 BK# 2022 PG# 1
 DEBRA K. LATHROP, CLERK OF LARAMIE COUNTY, WY PAGE 1 OF 1

Date of Field Work: 18 Aug 2007

Office Reference: _____

CROSS INDEX DIAGRAM

1	2	3	4	5	6	7	8	9	10	11	12	13	14	15	16	17	18	19	20	21	22	23	24	25		
A																									A	
B																									B	
C	6	5	4	3	2	1																			C	
D																										D
E																										E
F																										F
G	7	8	9	10	11	12																				G
H																										H
J																										J
K																										K
L	18	17	16	15	14	13																				L
M																										M
N																										N
O																										O
P	19	20	21	22	23	24																				P
Q																										Q
R																										R
S																										S
T	30	29	28	27	26	25																				T
U																										U
V																										V
W																										W
X	31	32	33	34	35	36																				X
Y																										Y
Z																										Z

Land Surveyor / Firm / Address _____

Studley Land Surveying, PC

John J. Studley, PLS No. 4828

5805 E. 13th St.

Cheyenne, WY 82001

Telephone: 307-287-4755

This corner record was prepared by me or under my direction and supervision.
 SEAL & SIGNATURE

